

From Russia With Love

by The Knitting Harpy, knittingharpy.wordpress.com

Originally conceptualized as a way to get the most out of one beautiful ball of Kidsilk Haze, From Russia With Love will keep your head and neck warm while simultaneously providing a crash course in the techniques of Orenburg lace knitting.

Orenburg lace is the perfect entrée into lace with multiple charts. The techniques and motifs were designed by hard-working USSR *babushkas* for whom a knitted shawl meant food and housing for a month. As a result, Orenburg lace looks intricate but is surprisingly simple to knit. Requiring only the knit stitch, yarn-over, k2tog and k3tog, it is easy to see that Orenburg lace is built for speed!



This moebius cowl incorporates borders knitted simultaneously with a simple middle “bowtie” motif accented by knitted strawberries. The cowl is knit flat, blocked, then given a half twist and seamed together to create the moebius shape. Other lace patterns can be substituted for the middle panel or the borders—just make sure they look the same on both sides.

Bowtie-and-strawberries motif and technique information from *Gossamer Webs: The History and Techniques of Orenburg Lace Shawls* by Galina Khmeleva and Carol R. Noble.



FINISHED MEASUREMENTS

Circumference: 45 inches

Length: 16 inches

MATERIALS

Rowan Kidsilk Haze [70% Super Kid Mohair, 30% Silk; 229 yards/210 meters per 25g skein]; color: Candy Girl; 1 skein

2 29 inch US #8/5mm circular needles

Stitch markers

Tapestry needle

Crochet hook

Smooth waste yarn

GAUGE

20 sts/20 rows = 4" in stockinette stitch

PATTERN NOTES

This pattern is begun using the provisional cast on.

The ends in this pattern are joined using Kitchener Stitch (grafting).

DIRECTIONS

Cast on 59 stitches using provisional cast on.

Begin working lace pattern following either the charts (and Pattern Notes) or written instructions below.

R1 (RS): Begin row of Left Border. Work Border chart (15 sts), pm. Work first row of Body panel (29 sts), pm, knit to end.

R2 (WS): Begin first row of Right Border. Right Border is worked identically to Left Border. Work Border chart (15 sts), knit to end.

R3 (RS): Work second row of Left Border, second row of Body panel and knit to end.

R4 (WS): Work second row of Right Border and knit to end.

Continue working through the lace patterns for seven repeats of Body Panel, ending with a right side (RS) row. DO NOT BIND OFF.

Border pattern (same for Right and Left Borders)

Note: Number of sts will vary between 15 and 18 sts.

R1: k3, yo, k2, k2tog, yo, k8

R2: k16

R3: k3, yo, k2, k2tog, yo, k9

R4: k17

R5: k3, yo, k2, k2tog, yo, k10

R6: k18

R7: k3, yo, k2tog, k2, yo, k2tog, k8

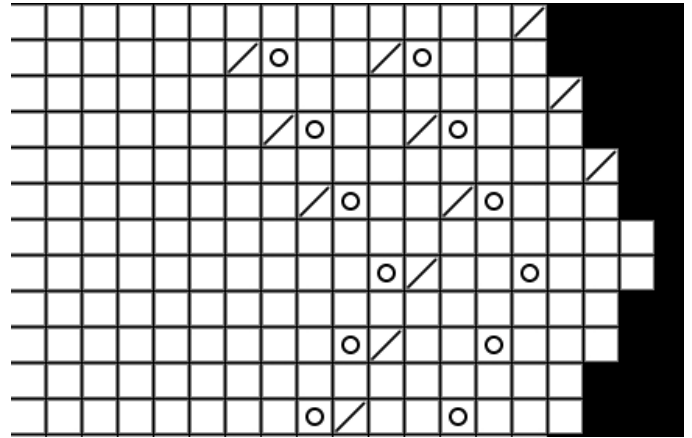
R8: k16, k2tog

R9: k3, yo, k2tog, k2, yo, k2tog, k7

R10: k15, k2tog

R11: k3, yo, k2tog, k2, yo, k2tog, k6

R12: k14, k2tog



Legend:

□ knit

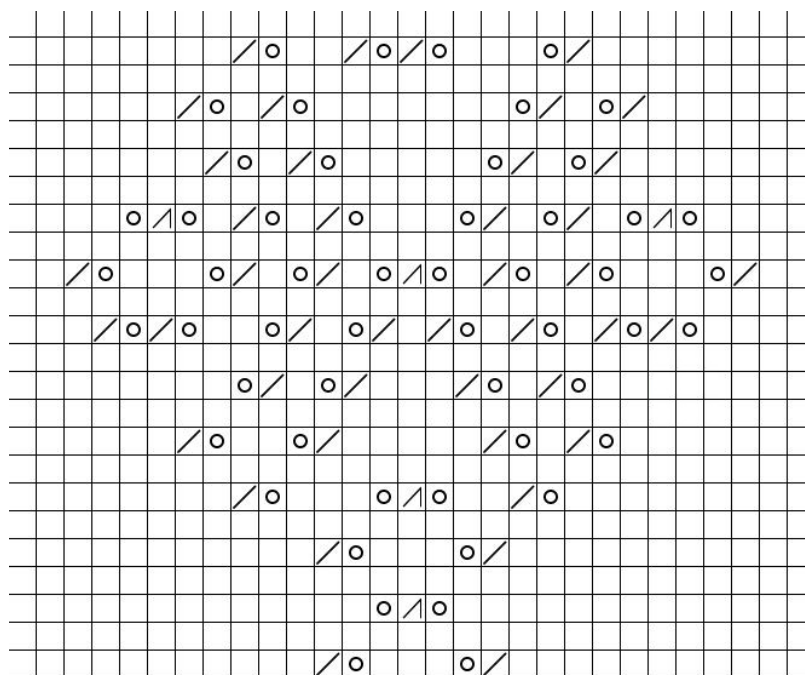
○ yo

∕ k3tog

∕ k2tog

■ No Stitch

Body panel (29 sts)



Main body pattern chart comes from *Gossamer Webs: The History and Techniques of Orenburg Lace Shawls*.

R1 (RS): k11, k2tog, yo, k3, yo, k2tog, k11

R2 (WS): k29

R3: k13, yo, k3tog, yo, k13

R4: k29

R5: k11, k2tog, yo, k3, yo, k2tog, k11

R6: k29

R7: k9, yo, k2tog, k2, yo, k3tog, yo, k3, yo, k2tog, k8

R8: k29

R9: k7, yo, k2tog, k1, yo, k2tog, k5, k2tog, yo, k2, yo, k2tog, k6

R10: k29

R11: k8, yo, k2tog, k1, yo, k2tog, k3, k2tog, yo, k1, k2tog, yo, k8

R12: k29

R13: k4, yo, k2tog, yo, k2tog, k1, yo, k2tog, k1, yo, k2tog, k1, k2tog, yo, k1, k2tog, yo, k2, yo, k2tog, yo, k2tog, k3

R14: k29

R15: k2, k2tog, yo, k3, yo, k2tog, k1, yo, k2tog, k1, yo, k3tog, yo, k1, k2tog, yo, k1, k2tog, yo, k3, yo, k2tog, k2

R16: k29

R17: k4, yo, k3tog, yo, k1, k2tog, yo, k1, k2tog, yo, k3, yo, k2tog, k1, yo, k2tog, k1, yo, k3tog, yo, k4

R18: k29

R19: k7, k2tog, yo, k1, k2tog, yo, k5, yo, k2tog, k1, yo, k2tog, k7

R20: k29

R21: k6, k2tog, yo, k1, k2tog, yo, k7, yo, k2tog, k1, yo, k2tog, k6

R22: k29

R23: k8, k2tog, yo, k3, yo, k2tog, yo, k2tog, k2, yo, k2tog, k8

R24: k29

FINISHING

Transfer provisional cast-on stitches to second size 8US needle. Pin knitting flat to desired dimensions and spray with warm water. Let dry.

After blocking, unpin cowl and twist one end 180 degrees. Join live stitches of ends together using Kitchener stitch to form a moebius.

Weave in ends.

